




# AERO EAST

2 & 3 BHK PREMIUM HOMES

Sales Phone No.: **9922931731**

 MAHARERA NO: Phase III - P52100049336

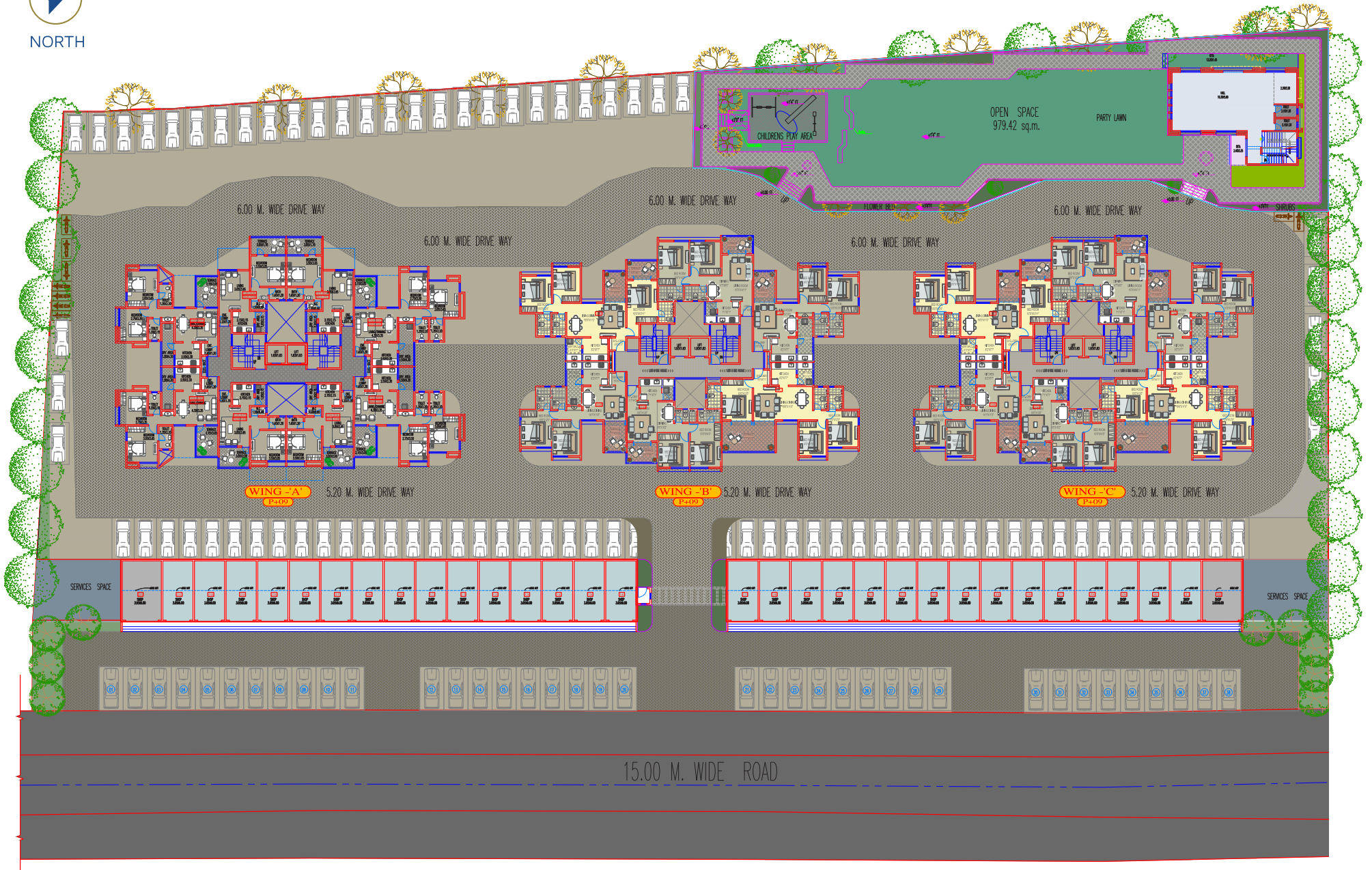
Project By:



**MIRACLE GURUKRUPA**  
DEVELOPERS



NORTH

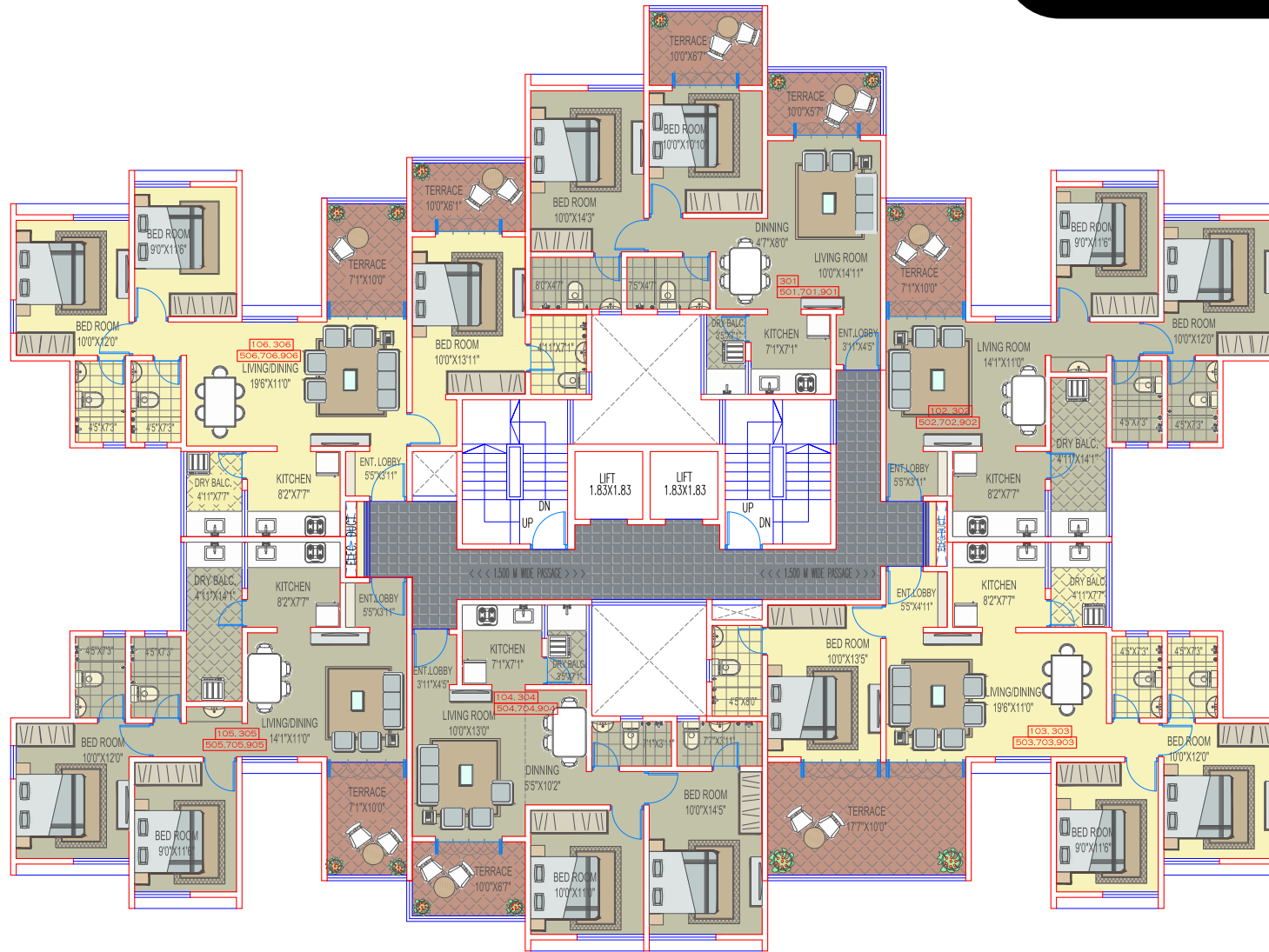




### 3 BHK PREMIUM APARTMENT



# TYPICAL FLOOR PLAN : 1<sup>ST</sup>, 3<sup>RD</sup>, 5<sup>TH</sup>, 7<sup>TH</sup> & 9<sup>TH</sup>

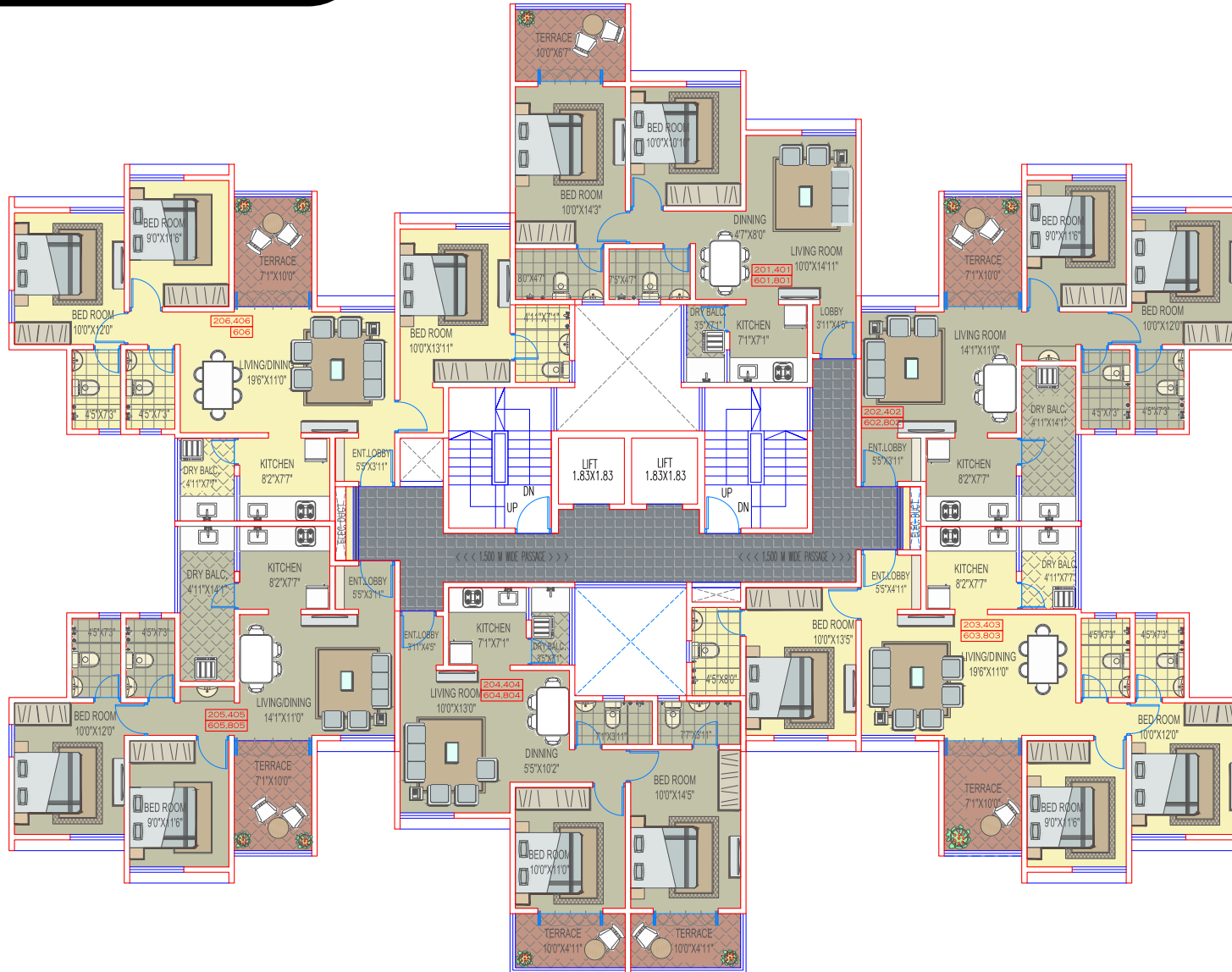


FLAT NO.	TYPE	CARPET AREA	DRY AREA	ENCL.BALC.	ENT. LOBBY	TOTAL CARPET	TERRACE CARPET	TOTAL SALEABLE
301,501,701,901	2-BHK	53.30	2.26	4.16	1.77	61.49	11.28	98.24
102,302,502,702,902	2-BHK	44.64	6.45	8.74	2.13	61.96	6.56	92.51
103,303,503,703,903	3-BHK	64.38	3.45	9.54	2.63	80.00	16.32	130.03
SQ.FT								
FLAT NO.	TYPE	CARPET AREA	DRY AREA	ENCL.BALC.	ENT. LOBBY	TOTAL CARPET	TERRACE CARPET	TOTAL SALEABLE
301,501,701,901	2-BHK	574	24	45	19	662	121	1057
102,302,502,702,902	2-BHK	481	69	94	23	667	71	996
103,303,503,703,903	3-BHK	693	37	103	28	861	176	1400

FLAT NO.	TYPE	CARPET AREA	DRY AREA	ENCL.BALC.	ENT. LOBBY	TOTAL CARPET	TERRACE CARPET	TOTAL SALEABLE
104,304,504,704,904	2-BHK	47.15	2.26	8.44	1.77	59.61	6.10	88.71
105,305,505,705,905	2-BHK	44.64	6.45	8.74	2.13	61.96	6.56	92.51
106,306,506,706,906	3-BHK	66.42	3.45	9.56	2.13	81.56	12.20	126.57
SQ.FT								
FLAT NO.	TYPE	CARPET AREA	DRY AREA	ENCL.BALC.	ENT. LOBBY	TOTAL CARPET	TERRACE CARPET	TOTAL SALEABLE
104,304,504,704,904	2-BHK	507	24	91	19	642	66	955
105,305,505,705,905	2-BHK	481	69	94	23	667	71	996
106,306,506,706,906	3-BHK	715	37	103	23	878	131	1362



# TYPICAL FLOOR PLAN : 2<sup>ND</sup>, 4<sup>TH</sup>, 6<sup>TH</sup> & 8<sup>TH</sup>



FLAT NO.	TYPE	CARPET AREA	DRY AREA	ENCL.BALC.	ENT. LOBBY	TOTAL CARPET	TERRACE CARPET	TOTAL SALEABLE
201.401,601,801	2-BHK	49.83	2.26	7.36	1.77	61.22	6.10	90.88
202.402,602,802	2-BHK	45.66	6.45	7.72	2.13	61.96	6.56	92.51
203.403,603,803	3-BHK	61.78	3.45	12.03	2.63	79.89	6.56	116.70
SQ.FT								
FLAT NO.	TYPE	CARPET AREA	DRY AREA	ENCL.BALC.	ENT. LOBBY	TOTAL CARPET	TERRACE CARPET	TOTAL SALEABLE
201.401,601,801	2-BHK	536	24	79	19	659	66	978
202.402,602,802	2-BHK	492	69	83	23	667	71	996
203.403,603,803	3-BHK	665	37	130	28	860	71	1256

FLAT NO.	TYPE	CARPET AREA	DRY AREA	ENCL.BALC.	ENT. LOBBY	TOTAL CARPET	TERRACE CARPET	TOTAL SALEABLE
204.404,604,804	2-BHK	52.85	2.26	2.90	1.77	59.78	9.15	93.05
205.405,605,805	2-BHK	45.45	6.45	7.73	2.13	61.76	6.56	92.23
206.406,606	3-BHK	63.84	3.45	11.85	2.13	81.26	6.56	118.56
SQ.FT								
FLAT NO.	TYPE	CARPET AREA	DRY AREA	ENCL.BALC.	ENT. LOBBY	TOTAL CARPET	TERRACE CARPET	TOTAL SALEABLE
204.404,604,804	2-BHK	569	24	31	19	643	98	1002
205.405,605,805	2-BHK	489	69	83	23	665	71	993
206.406,606	3-BHK	687	37	127	23	875	71	1276



NORTH

## 2 BHK PREMIUM APARTMENT



## AMENITIES

- ▶ Club House
- ▶ Gym
- ▶ Children Play Area
- ▶ Rain Water Harvesting
- ▶ Attractive Entrance Gate
- ▶ Solar System
- ▶ Fire Fighting System
- ▶ Video Door Phone
- ▶ Party Lawn
- ▶ Genset Backup for Lift & Common Area
- ▶ CCTV Security camera

## SPECIFICATIONS



### STRUCTURE

- ▶ RCC frame structure design for earthquake resistance



### BRICKWORK

- ▶ 6" internal & external brickwork



### PLASTER

- ▶ External sand faced and internal neeru finish plaster/gypsum



### KITCHEN

- ▶ Black granite kitchen platform with S.S. Sink
- ▶ Designer wall tiles upto lintel level
- ▶ Provision for exhaust fan & water purifier
- ▶ Dry Balcony



### FLOORING

- ▶ Vitrified flooring 2'x2'
- ▶ Anti-skid flooring for toilets & attached terraces



### PAINTING

- ▶ Internal oil bond distemper
- ▶ External semi acrylic finish paint



### ELECTRIFICATION

- ▶ Concealed copper wiring
- ▶ Modular switches
- ▶ Adequate electrical points with M.C.B & T.V.



### DOORS & WINDOWS

- ▶ Decorative main door with brass/S.S. fittings
- ▶ Internal flush door with std. fittings
- ▶ Granite door frame for toilets
- ▶ 3 track powder coated aluminium sliding windows with mosquito net with M.S. safety grills



### TOILETS

- ▶ Ceramic tiles upto lintel level
- ▶ Hot & Cold mixer Units with adequate C.P. fittings
- ▶ Concealed plumbing
- ▶ Adequate sanitary ware

Project By:



**Site Address:** Plot No.: S NO 53/9/1, 2, 3 & 4 at Undri, Haveli, Pune - 411 060

**Office Address:** 203, Sanskruti Mantra Apt., 2056, Vijaynagar Colony, Sadashiv Peth, Pune - 411 030

**Contact:** +91 9922 931731 | **Landline:** 020 - 24327719 | **Email:** miraclegdevp@gmail.com

www.miracleaassociates.com

MAHARERA NO: Phase III - P52100049336